

# 301

# THE QUINN

## ARTIST COLLECTION

2 BEDROOM | 2 BATH

~888 SQ. FT.

### LIVING

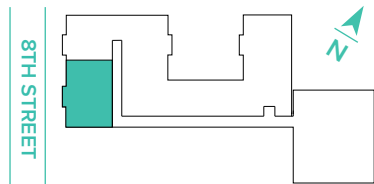
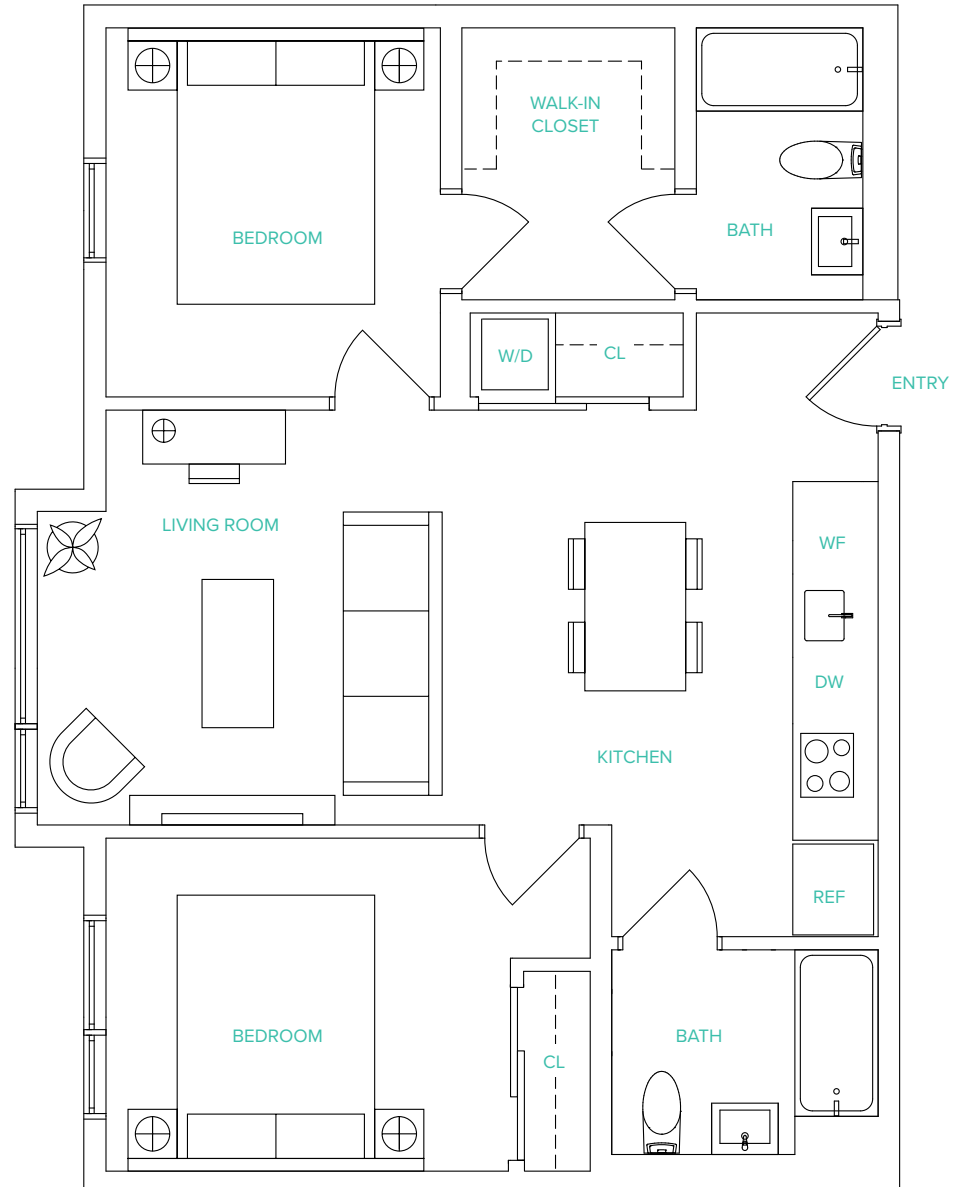
- Floor-to-ceiling Windows
- Wide-plank Oak Hardwood Flooring
- Samsung Smart Stacked Washer and Dryer System
- Nest Thermostats
- Latch Keyless Entry System

### KITCHEN

- Stainless Steel Bertazzoni Appliance Suite with Electric Range, Convection Oven and Microwave
- Stainless Steel GE Refrigerator
- Bosch Integrated Panel Dishwasher
- Quartz Countertops
- High-gloss White Cabinetry
- Moen Chrome Spring Kitchen Faucet
- Built-in Wine Cooler
- Herringbone-style Calacatta Marble Backsplashes

### BATH

- Kohler Lighted Mirror
- Grohe Chrome Bathroom fixtures
- High-gloss White Cabinetry
- Herringbone-style Calacatta Marble Backsplashes



THEQUINNSF.COM | 345 EIGHTH STREET | SAN FRANCISCO CA 94103



©2020 The Quinn. These marketing materials are for informational purposes only. The Quinn reserves the right to change floor plans, elevations, specifications, materials, colors, features or sales prices without prior notice. Such changes may not always be reflected in our model homes. All renderings, floor plans and handouts are artist's conceptions and are not intended to be an actual depiction of the buildings, walks, driveways or landscaping. Prices, terms and features are subject to change without notice. Square footages are approximate. Models do not reflect racial preference. Real estate consulting, sales and marketing by Polaris Pacific — a licensed California, Arizona, Colorado, Hawaii, Oregon and Washington broker — CA DRE license #01499250. 🏠